

Gompf

GOMPf BRACKETS, INC.
 1410 19th Ave. N.W.
 Issaquah, WA
 98027-8923
 Phone: (425)391-0495
 Fax: (425)391-0496

COPYRIGHT PROTECTED

DWG. NO. 9795-0000

MATERIAL:
 0.036 THK CRS

FINISH:
 BRIGHT NICKLE

TOLERANCES:
 STD. TOLS. ± 0.010
 RAD. TOLS. ± 0.010
 HOLE TOLS. ± 0.005
 MAT. TOLS. ± 0.002

SCALE: 1:1

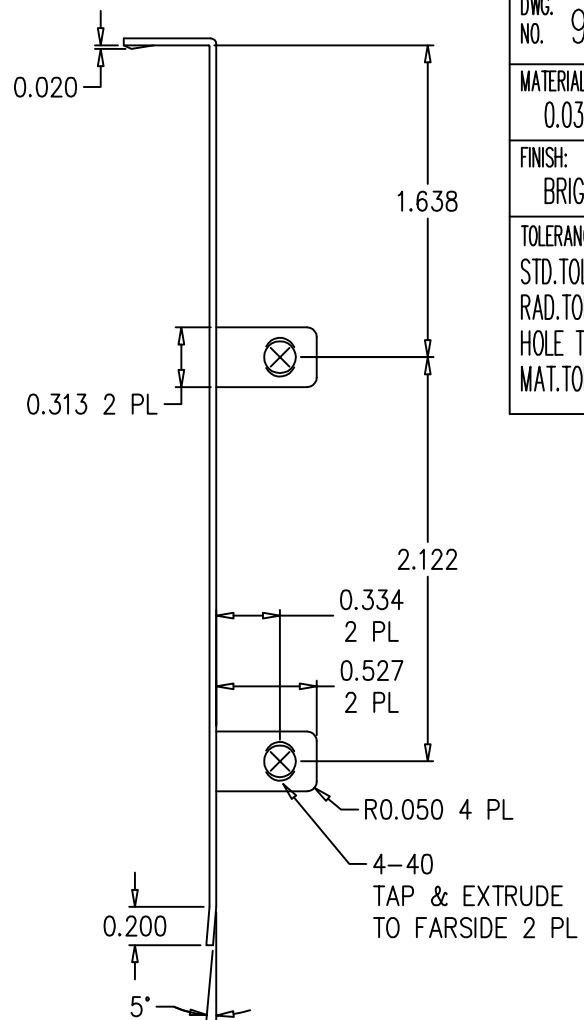
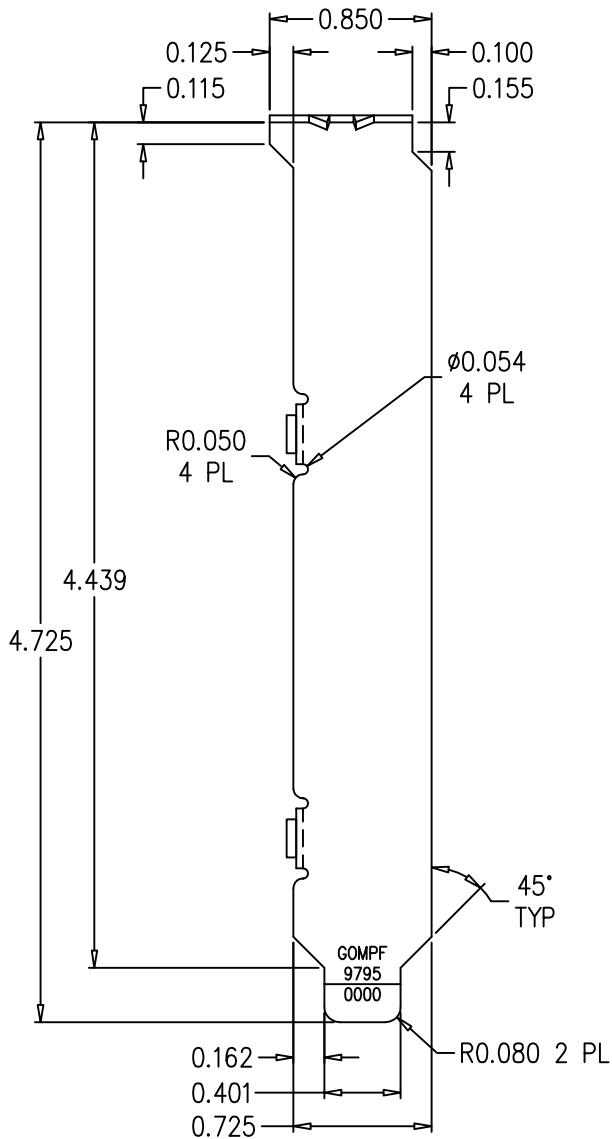
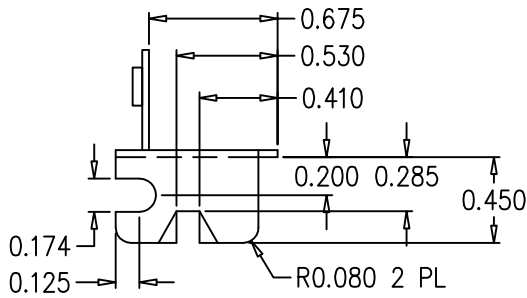
DATE: 6/19/02

REV. 0

ISSUED:

APPROVALS:

DRAWN BY: VW



NOTE: STANDARD LOW PROFILE TO FULL PROFILE ADAPTOR BRACKET