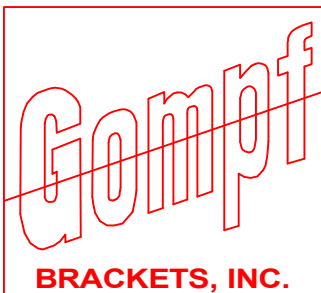
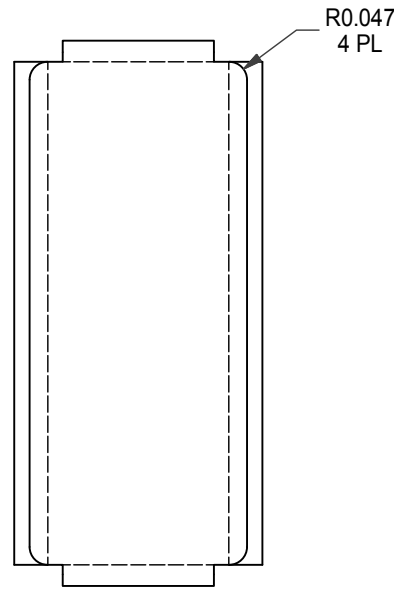
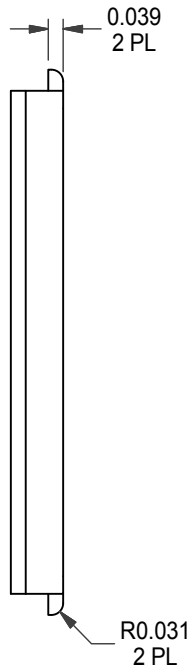
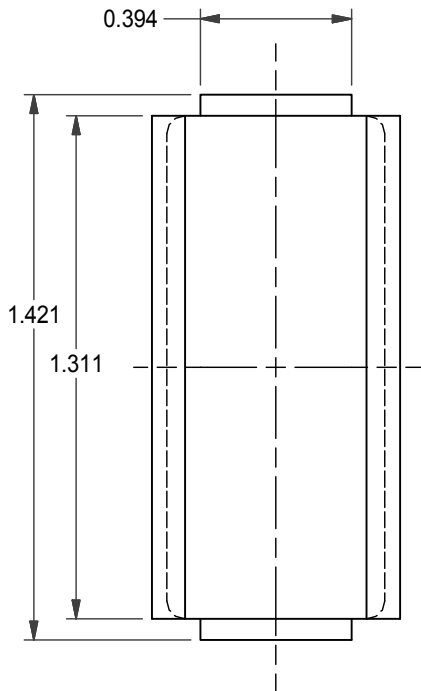
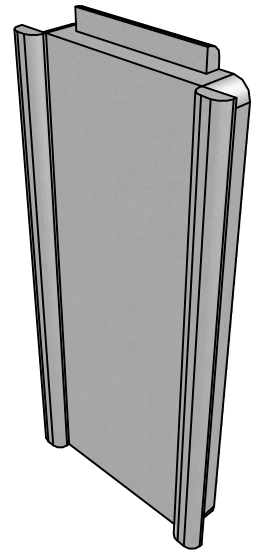
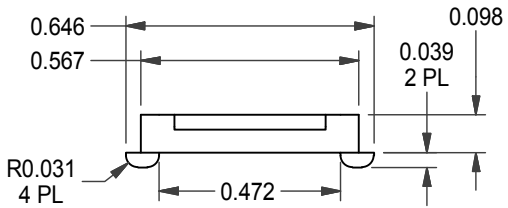


ENGINEERING CHANGE ORDER - (ECO)		
ECO #	DESCRIPTION	DATE
00	ORIGINAL	12/6/2002
01	ADDED RoHS REQUIREMENT	6/17/2009



DRAWN BY: valen	DATE: 6/17/2009
APPROVALS:	RoHS COMPLIANT: Yes
MATERIAL: 6061-T6 ALUMINUM	
FINISH: ACID ETCH (2 min), CLEAR CHROMATE	
TOLERANCES: STD. TOLS. ± 0.005 RAD. TOLS. ± 0.01 HOL. TOLS. ± 0.005 MAT. TOLS. ± 0.002	

## Gompf Brackets, Inc.

12426 Suite C Mukilteo Speedway - Mukilteo, WA 98275  
425-348-5002 (phone) 425-348-5150 (fax)  
sales@bracket.com -- www.bracket.com

COPYRIGHT PROTECTED		SIZE: A	SCALE: 2:1	GOMPf PART NUMBER: PC-MIP-1-0000	REV: 0	THIRD ANGLE 
---------------------	--	------------	---------------	-------------------------------------	-----------	-----------------

CUSTOMER NAME: CUSTOMER PART NUMBER: